

caracole



BACHELOR SMALL NIGHTSTAND

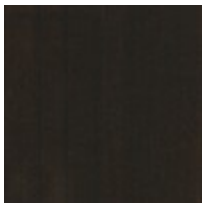
cla-024-065

COLLECTION: CARACOLE CLASSIC

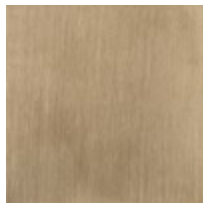
DIMENSIONS: 25W x 19D x 25H

This small, masculine nightstand uses hand-applied Tupelo veneers with a high-gloss Otter finish to achieve its handsome demeanor. The two drawers have rounded front edges and are punctuated by two recessed porthole pulls in Champagne Gold. The soft-closing drawers open to deep cases finished in UV Noir. The Dark Chocolate base is reset as a finishing touch.

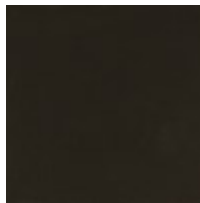
FINISH:



Otter Gloss



Champagne Gold



Dark Chocolate