

caracole



BRIDGE THE GAP

uph-sofwoo-47a

COLLECTION: CARACOLE UPHOLSTERY

DIMENSIONS: 84.5W x 37D x 34.25H

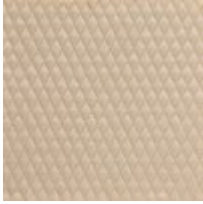
Classical details add everyday panache to this stylish sofa. A Go With The Grain finish enhances the natural beauty of the wood and draws your eye to the hand-carved fluting detail that defines the frame. The faux-ratchet arms gracefully splay outward, as does the back, leaving an artistic gap that adds interest to its sleek silhouette. The sofa oozes relaxed luxury with its diamond-quilted, cotton satin fabric in pastel parchment. A flared skinny leg and artistic array of pillows in misty jade and silk paisley are the luxurious details that make this sofa a chic addition to casually elegant spaces within your home.

CONSTRUCTION: Spring down cushion. | 8-way hand tied seat. | Feather down pillows.

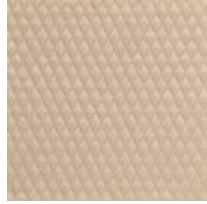
FINISH:



FABRIC:



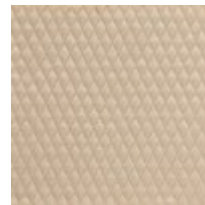
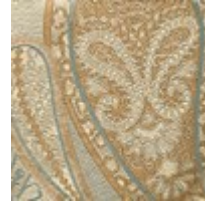
Body Fabric:
2407-34CC



Pillow Fabric: 2-
17" x 17" Pillows
2407-34CC



1-17" x 17"
Pillow 8123-
79CC



1-17" x 12"
Pillow Front
5080-11CC,
Back and Welt
2407-34CC