

# caracole



## LATTICE ENTERTAIN YOU

uph-sofwoo-35b

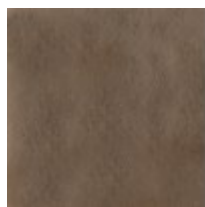
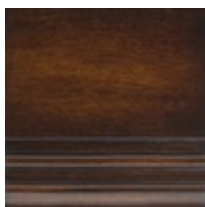
**COLLECTION:** CARACOLE UPHOLSTERY

**DIMENSIONS:** 78W x 37.25D x 30.25H

\*AVAILABLE IN CARACOLE COUTURE CUSTOM UPHOLSTERY PROGRAM\* Elegant embroidered fabric was the starting point for this exposed wood frame, influencing the open fretwork design on each arm panel. The Go With The Grain finish is further set off by Brushed Antique Brass metal accents and a lush textured fabric. Float this sofa in a room in which you are able to take in all the sides – we think it's stunning from every angle.

**CONSTRUCTION:** Ultra plush down cushion. | 8-way hand tied seat. | Feather down pillows.

## FINISH:



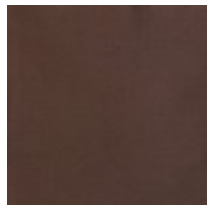
Go With The Grain

Brushed  
Antique Brass

**FABRIC:**



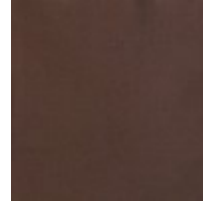
Body Fabric:  
2493-82CC



Pillow Fabric: 2-  
20" x 14" Pillows  
Center Front  
Panel 3148-  
28CC, Front  
Ends, Welt, and  
Back 3131-  
28CC with  
Double Row of  
Trim U00454



2-20" x 20"  
Pillows 2556-  
91CC



1-20" x 20"  
Pillow 3131-  
28CC