

# caracole



## LATTICE ENTERTAIN YOU

uph-sofwoo-35a

**COLLECTION:** CARACOLE UPHOLSTERY

**DIMENSIONS:** 78W x 37.25D x 30.25H

Elegant embroidered fabric was the starting point for this exposed wood frame, influencing the open fretwork design on each arm panel. The Tuxedo Black finish is further set off by matte brass plated metal accents and a lush textured fabric. Float this sofa in a room in which you are able to take in all the sides, as we think it's stunning from every angle.

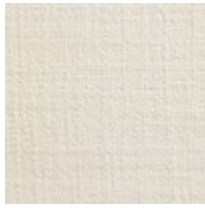
**CONSTRUCTION:** Ultra plush down cushion. | 8-way hand tied seat. | Feather down pillows.

**FINISH:**

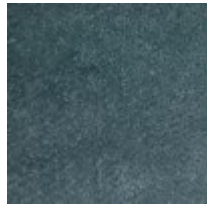
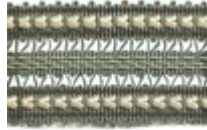


Tuxedo\_Black

**FABRIC:**



Body Fabric: 2284-86CC



Pillow Fabric: 2-20" x 14" Pillows Front 8104-52CC, Front Ends 2153-52CC with Double Row of Trim U00415, Back 2285-52CC



2-20" x 20" Pillows 2285-52CC



1-20" x 20" Pillow 2153-52CC