

caracole



IT'S ALL GREEK TO ME

uph-chawoo-60a

COLLECTION: Caracole Upholstery

DIMENSIONS: 27.75W x 23.75D x 29.5H

A popular chair form since the 4th Century, our version of the esteemed Klismos design includes a lower profile seat and exaggerated back panel. Finished in Tuxedo Black with custom designed Nickel metal accents, the seat is covered in rich cognac leather. A beautifully designed statement piece.

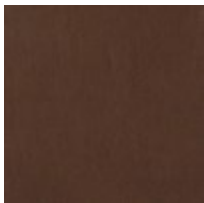
CONSTRUCTION: Plush poly foam tight seat.

FINISH:



Tuxedo_Black

FABRIC:



Body: 9050-80CC Leather