

caracole



BLACK BEAUTY

uph-chawoo-54c

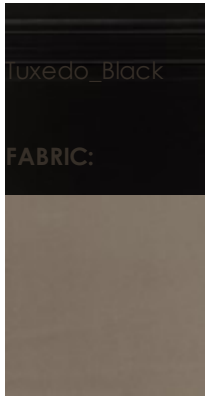
COLLECTION: CARACOLE UPHOLSTERY

DIMENSIONS: 26W x 29.5D x 30.25H

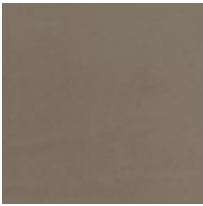
We love this striking statement piece whose chic design offers a fresh take on the classic Windsor-style chair. Its rich Tuxedo Black finish brings its shape to life while a plush, velvety soft seal grey fabric distinguishes its seat cushion and back pillow. Metal arm cap details and metal ferrules add a touch of artistry and glamour to its spirited aesthetic.

CONSTRUCTION: Plush poly foam cushion. | Feather down pillow.

FINISH:



Body Fabric: 2432-70CC



Pillow Fabric: 1-22''' x 22''' Pillow 2432-70CC