

caracole



SEAMS TO ME

uph-chalou-80b

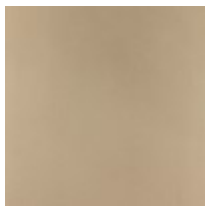
COLLECTION: CARACOLE UPHOLSTERY

DIMENSIONS: 31.75W x 36D x 33H

Escape the ordinary by adding this fashionable chair to your room or put two together to create a unique conversation area. Fiercely fashion-forward, it showcases the brilliance of thinking outside the box. Upholstered in a touchably soft dove grey velvet fabric, its shapely silhouette is outlined with weltless seam detailing. Exquisite tailoring and legs finished in Taupe Paint complete the look.

CONSTRUCTION: Plush poly foam cushion. | 8-way hand tied seat.

FINISH:



Taupe_Paint

FABRIC:



Body Fabric: 2301-
71H, Contrast Seam
2530-34CC