

# caracole



## ECHO LOUNGE

uph-425v-071-a

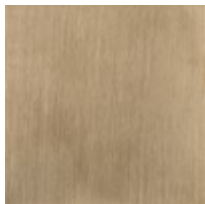
**COLLECTION:** CARACOLE UPHOLSTERY

**DIMENSIONS:** 81W x 44.5D x 28H

The Echo Lounge combines plush upholstery in pale grey mohair with Champagne Gold metal legs and table supports. Its integrated accent table crafted from luxurious Gray Onyx stone provides sophisticated functionality, making it an exquisite addition to your living area.

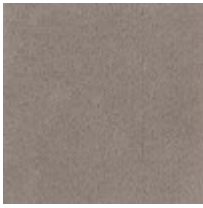
**CONSTRUCTION:** Spot table: 14.5"W x 14.5"D x 20H

**FINISH:**



Champagne\_Gold

**FABRIC:**



Body Fabric: 2681-  
70CC