

# caracole



## LUMI WEDGE

uph-424-we2-a

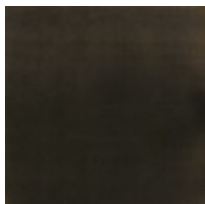
**COLLECTION:** CARACOLE UPHOLSTERY

**DIMENSIONS:** 62.5W x 40D x 27H

The Lumi Wedge's diamond shape is the perfect corner extender for the Lumi Sectional. You will want to sink into its ivory plushlystuffed seat. The back extends across the length of the piece. The body of the chaise is fully upholstered in a micro-ribbed linen blend, while two cushions feature an Ivory mohair and wool-blend velvet. The chair's pegged feet pop from underneath in Almost Black.

**CONSTRUCTION:** 8-way hand tied seat | Spring down cushion | Feather down pillows

**FINISH:**



Almost-Black

**FABRIC:**



Body Fabric: 2637-  
34CC-P  
Performance, Pillow  
Fabric: 2- 16"x19"  
pillow fabric 2681-  
34CC-P  
Performance with  
2.5" box pleat