

# caracole



## THREE'S COMPANY RAF CHAISE

uph-424-rh1-f

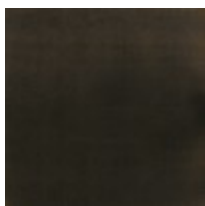
**COLLECTION:** CARACOLE UPHOLSTERY

**DIMENSIONS:** 64W x 45.5D x 32H

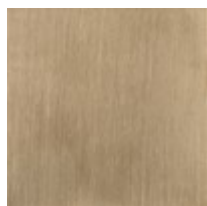
This regal sectional makes a dramatic showpiece that emanates glamour. Upholstered in velvet, its curved profile is complemented by sumptuous comfort. Reflecting the gracious elegance of the Hollywood Regency era, it features a shapely back button-tufted with vertical, cuff link-inspired gold metal bars. Its lower edge and outer arms are trimmed in Almost Black while its metal tapered feet are finished in Champagne Gold. Artful from edge to edge, this statement piece creates drama wherever it goes.

**CONSTRUCTION:** 8-way hand tied seat | Spring down cushion

**FINISH:**

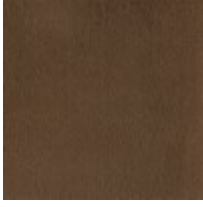


Almost Black



Champagne Gold

**FABRIC:**



Body Fabric: 2794-  
44CC