

caracole



THREE'S COMPANY RAF CHAISE

uph-424-rh1-d

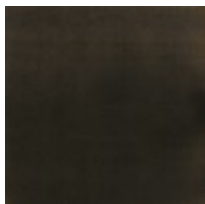
COLLECTION: CARACOLE UPHOLSTERY

DIMENSIONS: 64W x 45.5D x 32H

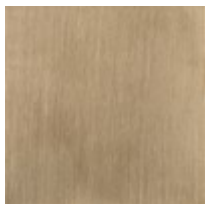
This regal sectional makes a dramatic showpiece that emanates glamour. Upholstered in velvet, its curved profile is complemented by sumptuous comfort. Its lower edge and outer arms are trimmed in Almost Black while its metal tapered feet are finished in Champagne Gold. Artful from edge to edge, this statement piece creates drama wherever it goes.

CONSTRUCTION: 8-way hand tied seat | Spring down cushion

FINISH:



Almost Black



Champagne Gold

FABRIC:



Body Fabric: 2794-
34CC