

caracole



LUMI LAF CHAISE

uph-424-lh2-a

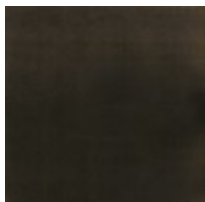
COLLECTION: CARACOLE UPHOLSTERY

DIMENSIONS: 66.5W x 38.5D x 27H

The Lumi Chaise slightly bends to create a gentle curve as part of the left side of the Lumi Sectional. You will want to sink into its ivory plushly-stuffed seat. The back extends three-quarters of the length of the piece. The body of the chaise is fully upholstered in a microribbed linen blend, while two cushions feature an Ivory mohair and wool-blend velvet. The chair's pegged feet pop from underneath in Almost Black.

CONSTRUCTION: 8-way hand tied seat | Spring down cushion | Feather down pillows

FINISH:



Almost-Black

FABRIC:



Body Fabric: 2637-34CC-P
Performance, Back
Cushion 2681-34CC-P



Pillow Fabric: 2-16"x19" back
pillow 2681-34CC-P
Performance with
2.5" box pleat