

caracole



HELENA CHAIR

uph-424-133-a

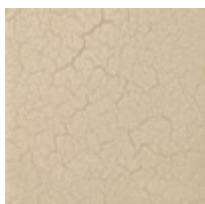
COLLECTION: CARACOLE UPHOLSTERY

DIMENSIONS: 30W x 29.75D x 32.25H

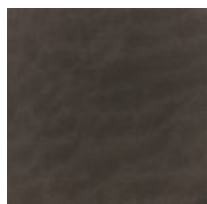
A modern interpretation of classic Roman shapes, this piece is remarkable for its deep-scooped wood frame with an Ivory Craze cracked finish that is trimmed with Brushed Gold paint. The frame is perched on a wood-tiered base in Charred Bark with Brushed Gold metal corner appliques. This regal chair's inside frame and plush cushion showcase a Mushroom faux mohair velvet.

CONSTRUCTION: Webbed seat | Plush poly foam cushion

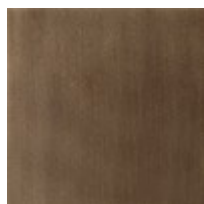
FINISH:



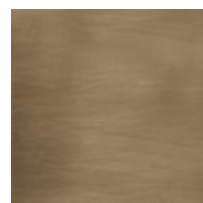
Ivory Craze



Charred Bark



Brushed Gold Paint



Brushed Gold

FABRIC:



Body Fabric: 21003-
82CC