

# caracole



## HOMAGE

uph-423-231-a

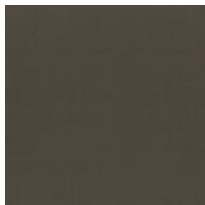
**COLLECTION:** CARACOLE UPHOLSTERY

**DIMENSIONS:** 29.75W x 29.25D x 30H

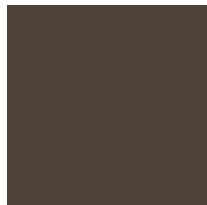
Quintessential Caracole, this sculptural chair introduces an airy silhouette, articulated by ribbon metal arms and a floating back and seat. Every detail is intentional, from the slender dowel that neatly secures the bolster pillow, to the outward turning, tapered wood legs capped in Brushed Deep Bronze metal. A plush seat in deep green mohair fabric adds warmth and a luxe note.

**CONSTRUCTION:** Webbed seat | Foam cushion.

### FINISH:



Brushed Deep  
Bronze



Warm Slate

**FABRIC:**



Seat Fabric: 2956-53CC



Top cushion 2633-88CC