

caracole



CUT AWAY

uph-423-132-a

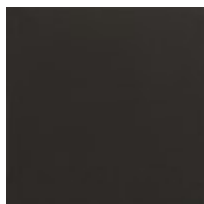
COLLECTION: CARACOLE UPHOLSTERY

DIMENSIONS: 36.5W x 28.5D x 29.5H

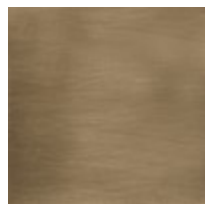
With an elegant profile, this exquisitely designed chair is best appreciated from the side or back view. Named for the cutaway men's dress shirt, it features textured metal inserts in Brushed Gold metal applied to vertical cuts along the outback. Inspired by a folding, three-panel screen, canted arms create a subtle taper, accentuated by exposed wood trim in a warm Seal Skin finish.

CONSTRUCTION: Rubber webbing seat. | Spring down cushion. | Feather down pillows

FINISH:

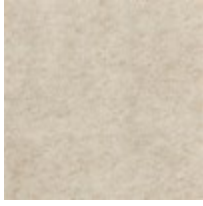


Seal Skin



Brushed Gold

FABRIC:



Body Fabric: 2956-
87CC