

caracole



TUXEDO CHAIR

uph-423-033-a

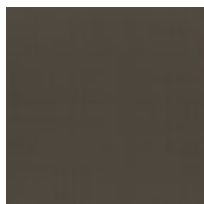
COLLECTION: CARACOLE UPHOLSTERY

DIMENSIONS: 39W x 36.5D x 29H

Exuding warmth and comfort with an air of confidence, this classic shelter arm chair features clean lines and crisp tailoring in a deep chocolate brown hue. Inspired by modern takes on the iconic tuxedo, its enveloping silhouette is wrapped in a textured woven linen, complemented by a luxe mohair fabric on the inside arms, seat and back. Metal legs in brushed deep bronze add warmth and a dashing finish, complemented by a bronze faux mohair toss pillow.

CONSTRUCTION: 8-Way hand tied seat. | Blendown supreme cushion. | Feather down pillow.

FINISH:



Brushed_Deep_Bronze

FABRIC:



Body Fabric: Inside
2956-81CC



Outside 2966-80CC



Pillow Fabric: (1) 22"
x 20" pillow fabric
2956-80CC