

caracole



LIMITLESS CHAIR

uph-423-032-a

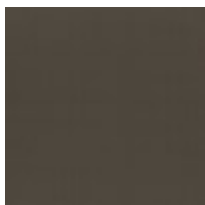
COLLECTION: CARACOLE UPHOLSTERY

DIMENSIONS: 32.5W x 39.5D x 34H

Meticulously tailored yet beautifully worn in a distressed chenille fabric, this versatile chair introduces a classic silhouette with Art Deco influences. Accentuating subtly angles and a sophisticated profile, a micro suede border lends tonal contrast and texture, warmly complemented by tapered feet in a Brushed Deep Bronze metal.

CONSTRUCTION: 8-Way hand tied seat. | Spring down cushion.

FINISH:



Brushed_Deep_Bronze

FABRIC:



Body Fabric: 2957-
88CC-P
Performance



contrast border
2633-88CC