

caracole



TUXEDO SOFA

uph-423-013-b

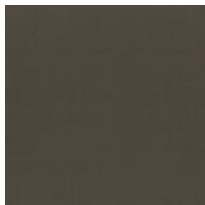
COLLECTION: CARACOLE UPHOLSTERY

DIMENSIONS: 86.5W x 38.75D x 29.75H

With clean lines and crisp tailoring in a fresh neutral hue, this classic shelter arm sofa is inspired by modern takes on the iconic tuxedo. Impeccably dressed, its confident silhouette is punctuated by a faux mohair opal fabric on the inside arms, bench seat, and back cushion, with a textured woven wrapping the sides and back. Metal legs in brushed deep bronze add warmth and a dashing finish, complemented by a tonal chenille toss pillow.

CONSTRUCTION: 8-Way hand tied seat. | Plush poly foam cushion. | Feather down pillows.

FINISH:

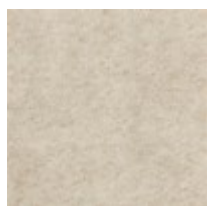


Brushed_Deep_Bronze

FABRIC:



Body Fabric: Outside



Inside 2956-87CC



Pillow Fabric: 2- 22" x

2966-74CC-P
Performance

20" pillow fabric
2940-34CC