

caracole



TUXEDO SOFA

uph-423-013-a

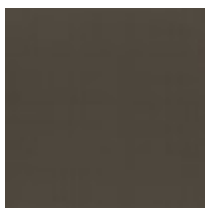
COLLECTION: CARACOLE UPHOLSTERY

DIMENSIONS: 86.5W x 38.75D x 29.75H

With clean lines and crisp tailoring in a deep chocolate brown hue, this classic shelter arm sofa is inspired by modern takes on the iconic tuxedo. Impeccably dressed, its confident silhouette is punctuated by a luxe mohair fabric on the inside arms, bench seat, and back cushion, with a textured woven linen wrapping the sides and back. Metal legs in brushed deep bronze add warmth and a dashing finish, complemented by a bronze faux mohair toss pillow.

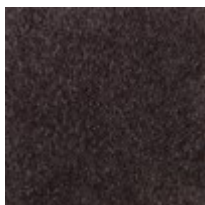
CONSTRUCTION: 8-way hand tied seat. | Blendown supreme cushion. | Feather down pillows

FINISH:

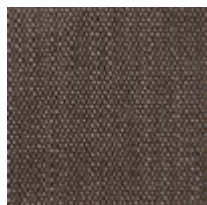


Brushed_Deep_Bronze

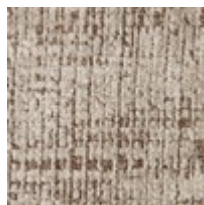
FABRIC:



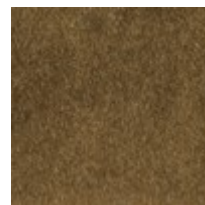
Body Fabric: Inside
2956-81CC



Outside 2966-80CC



Pillow Fabric: (2) 22"
x 20" pillow fabric



(1) 24" x 16" kidney
pillow 2956-80CC

2959-79CC