

# caracole



## ARCHIPELAGO LAF LOVESEAT

uph-422-III1-a

**COLLECTION:** CARACOLE UPHOLSTERY

**DIMENSIONS:** 48.5W x 37D x 28H

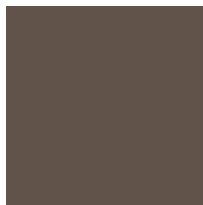
With numerous configurations and options for in-the-moment customization, the Archipelago collection introduces a relaxed sit with a refined aesthetic. Upholstered in a neutral twill fabric with a faux leather accent, and elevated on an exposed Bourbon Glaze wood base with metal legs in a Deep Bronze finish. Style luxe down pillows with a color-blocked expression of saffron velvet, or reverse to display an embroidered, geometric pattern. Collection also includes an armless chair, and matching armchair.

**CONSTRUCTION:** 8- way hand tied seat. | Spring down cushion. | Feather down pillow.

### FINISH:



Bourbon Glaze

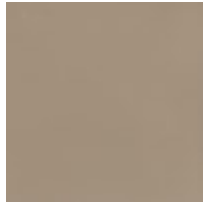


Deep Bronze

### FABRIC:



Body Fabric:2893-  
53CC-P  
Performance



Contrast Fabric  
9186-53CC-P  
Performance



Pillow Fabric:1-17x29  
Arm Pillow 2893-  
53CC-P  
Performance



1-17x34 Back pillow  
2893-53CC-P  
Performance