

# caracole



## SINUOUS

uph-422-232-a

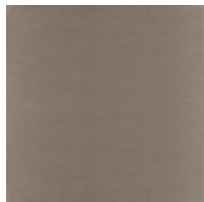
**COLLECTION:** CARACOLE UPHOLSTERY

**DIMENSIONS:** 28W x 33.5D x 31.5H

Inspired by art deco bentwood chairs this updated version features Smoke Stainless steel framework to support the plushly upholstered seating. Fabric is an exaggerated basket weave embroidery on a streak linen like ground. The blending of modern casual with deco influence is an evolution in design inspired by the greats to create the greatness tomorrow

**CONSTRUCTION:** Webbing | Seat cushion with foam.

**FINISH:**



Brushed\_Stainless

**FABRIC:**



Body Fabric: 4117-  
34CC