

# caracole



## POLLUX

uph-422-045-a

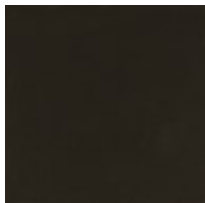
**COLLECTION:** CARACOLE UPHOLSTERY

**DIMENSIONS:** 26W x 15.5D x 18.5H

An artful integration of form and function, this faceted storage ottoman is named for one of the Gemini twins in Greco-Roman mythology. Upholstered in a luxuriously soft mohair fabric, its sculptural silhouette is balanced on a Dark Chocolate plinth base. Style on its own in a living room or conversation nook, or pair with Castor and Gemini, our faceted spot table, for chic end-of-bed storage and plush seating option.

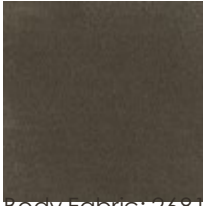
**CONSTRUCTION:** Seat cushion with foam

**FINISH:**



Dark\_Chocolate

**FABRIC:**



Body Fabric: 2681-  
91CC