

# caracole



## LET IT STEEP

uph-422-034-a

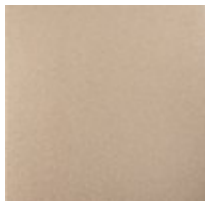
**COLLECTION:** CARACOLE UPHOLSTERY

**DIMENSIONS:** 27W x 31D x 38.5H

With the timeless appeal of velvet and gold, this occasional chair makes an ever-elegant statement. Gently sloping arms accentuate its sleek, angled profile, while providing a place for the elbows to rest. Fully upholstered in a cleanable cream-colored velvet, complemented by Sparkling Argent flared front legs dressed in a Whisper of Gold metal ferrules.

**CONSTRUCTION:** 8-way hand tied seat. | Seat cushion with foam.

**FINISH:**



Sparkling\_Argent

**FABRIC:**



Body Fabric:2890-  
35CC-P  
Performance