

# caracole



## PIPING HOT

uph-422-011-c

**COLLECTION:** CARACOLE UPHOLSTERY

**DIMENSIONS:** 110W x 38D x 30.75H

An iconic silhouette is reimagined in a menswear-inspired, tactile fabric for a statement-making sofa that's chic and sophisticated. Clean lines and curves with a smooth upholstered back define this classic style, accentuated by contrast piping along the frame and seat cushions. Fluted tapered legs in Soft Silver paint add a hint of glamour, complemented by down toss pillows in a lush velvet colorstory.

**CONSTRUCTION:** No sag seat. | Plush poly foam cushion. | Feather down pillows.

### FINISH:

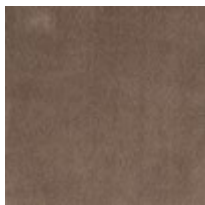


Soft\_Silver\_Paint

### FABRIC:



Body Fabric: 6128-77CC-P Performance,



Pillow Fabric: 3-19" x 19" Pillows 3250-18CC



4-24" x 20" Pillows 2979-18CC

Contrast Welt 2979-  
18CC