

# caracole



## SIMPLY STUNNING

uph-421-111-a

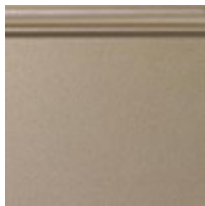
**COLLECTION:** CARACOLE UPHOLSTERY

**DIMENSIONS:** 93W x 41D x 31.75H

With a graceful, flowing shape, this timeless sofa draws on the iconic French curve for design inspiration. Classic details include a gently bowed bench seat and exposed wood frame, finished in a Silver Shadow paint for a modern take. Soft and sophisticated in a slate-colored performance chenille with a metallic thread, it introduces a whisper of indulgence to living interiors. Accent pillows in a woven ogee pattern and shimmering satin add a luxe finishing touch.

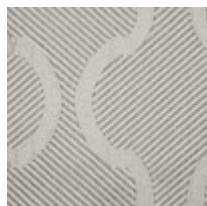
**CONSTRUCTION:** 8-way hand tied seat. | Spring down cushion. | Feather down pillows.

### FINISH:



Silver\_Shadow

### FABRIC:



Body Fabric: 2851-  
93CC-P  
Performance



2-18" x 18" Pillows  
3245-89CC

Pillow Fabric: 3-20" x  
20" Pillows 5145-  
89CC with Contrast  
Welt 3245-89CC