

# caracole



## SPLASH OF FLASH SOFA

uph-420-112-b

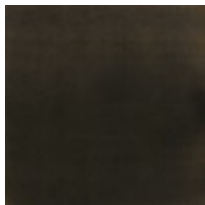
**COLLECTION:** CARACOLE UPHOLSTERY

**DIMENSIONS:** 86W x 39D x 33H

Tailored to perfection in an ivory linen woven fabric, this fresh take on a classic Caracole design features a softly curved silhouette dramatically defined by an Almost Black finish. Delicate metal ferrules and knuckles on the front arms draw their inspiration from an antique Italian parlor chair. Sumptuous pillows in coordinating ivory and silver tones add comfort and fashion to the overall design of this sophisticated sofa.

**CONSTRUCTION:** 8-way hand tied seat. | Spring down cushion. | Feather down pillows.

### FINISH:

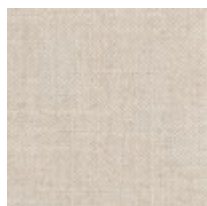


Almost-Black

### FABRIC:



Body Fabric: 2998-



Pillow Fabric: 3-24''' x

34CC-P  
Performance

20''' Pillows Fabric  
2998-34CC-P  
Performance