

caracole



JUST DUET

uph-420-111-a

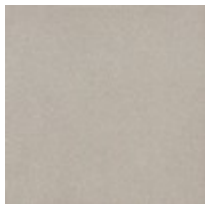
COLLECTION: CARACOLE UPHOLSTERY

DIMENSIONS: 87.75W x 42.25D x 28.5H

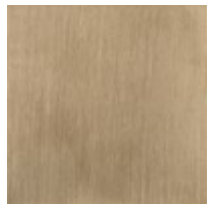
Every time you see the Just Duet sofa, you'll remember the remarkable story behind its design inspiration. Its sumptuous seating area is bordered by a one-of-a-kind wood frame featuring carvings inspired by the patterns of a palace balcony railing in India. The layering of metal fretwork behind the wood was inspired by the dual shadow cast on the balcony by the setting sun as seen through the railing's design. Creating a high fashion look unique to itself, these elements are highlighted with illuminating shades of Soft Silver Paint and Champagne Gold. Exquisite fabrics and touchably luxe accent pillows complete its appeal.

CONSTRUCTION: 8-way hand tied seat. | Springdown cushion. | Feather down pillows.

FINISH:

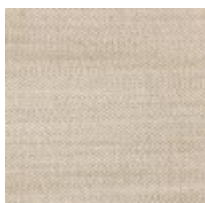


Soft Silver Paint



Champagne Gold

FABRIC:



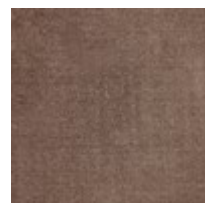
Body Fabric: 2785-35CC



Outside Arm 3127-71CC



Pillow Fabric: 2-21" x 21" Pillows 5140-



2-18" x 18" Pillows 2780-31CC

