

# caracole



## LOOP ME IN

uph-420-031-a

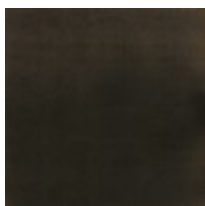
**COLLECTION:** CARACOLE UPHOLSTERY

**DIMENSIONS:** 33W x 33.75D x 31.25H

Envision a model walking down the runway in a couture dress with her shoulders draped in a matching cape and you've got a peek at the designers' muse as they created this exceptional chair. Its curvaceous silhouette is highlighted with a peek-through opening at the seat while a swivel base renders it perfect for following conversations around the room. Beautifully tailored in an exquisite cover of nuanced shades, it offers everything you want in a chair...and more.

**CONSTRUCTION:** 8-way hand tied seat. | Springdown cushion.

**FINISH:**



Almost-Black

**FABRIC:**



Body Fabric: 4112-87CC