

# caracole



## PIPING HOT

uph-420-012-c

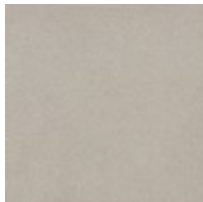
**COLLECTION:** CARACOLE UPHOLSTERY

**DIMENSIONS:** 86W x 38D x 30.75H

An iconic silhouette is reimagined in a menswear-inspired, tactile fabric for a statement-making sofa that's chic and sophisticated. Clean lines and curves with a smooth upholstered back define this classic style, accentuated by contrast piping along the frame and bench seat cushion. Fluted tapered legs in Soft Silver paint add a hint of glamour, complemented by down toss pillows in a lush velvet colorstory.

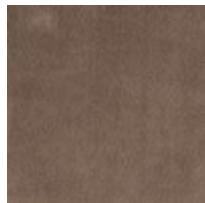
**CONSTRUCTION:** No sag seat. | Plush poly foam cushion. | Feather down pillows.

### FINISH:



Soft\_Silver\_Paint

### FABRIC:



Body Fabric: 6128-  
77CC-P  
Performance

Contrast Welt 2979-  
18CC

Pillow Fabric: 3-24<sup>mm</sup> x  
20<sup>mm</sup> Pillows 3250-  
18CC