

caracole



UNDER CURRENTS

uph-419-we2-a

COLLECTION: CARACOLE UPHOLSTERY

DIMENSIONS: 71.75W x 41.5D x 28.25H

Fresh yet understated, this stunning modular sectional embodies easygoing elegance. Its fresh coastal personality shines through in a palette of soft neutrals paired with sea glass blue-greens. Undulating lines mimicking waves are quilted into the outside back of this sectional and add to its unique presence. A soft Whisper of Gold finish lends a touch of sheen to its base and legs. For gatherings large or small, this sophisticated sectional conveys comfort and style.

CONSTRUCTION: Spring down cushion. | 8-Way hand tied seat. | Feather down pillows.

FINISH:

Whisper_of_Gold

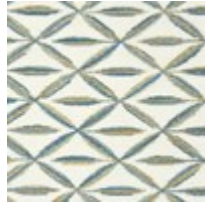
FABRIC:



Body Fabric:
2702-87CC-P
Performance



Pillow Fabric: 2-
17" x 17" Pillows
2703-52CC



1-24" x 16"
Pillow 8338-
52CC