

caracole



GRAND OPENING

uph-419-rs1-a

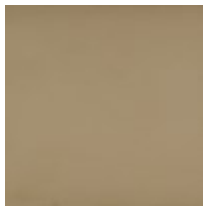
COLLECTION: CARACOLE UPHOLSTERY

DIMENSIONS: 85.5W x 44.5D x 32H

When it comes to an amazing living space, everything in the room revolves around a statement sofa such as this one. Grand in every aspect, this two-piece modern sectional offers a head-turning style complemented with deep comfort. It's signature elongated arc shape is accented with rippling lines around the top of the seat back that catch the eye and create visual energy. Curvaceous ribbons finished in Gold Bullion are laced about the base. Upholstered in sumptuously soft cream velvet, it includes a fashionable array of accent pillows in a palette of complex neutrals with luxe patterns and textures.

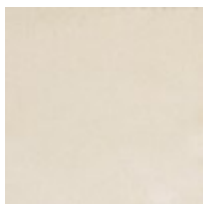
CONSTRUCTION: Plush poly foam cushion. | 8-Way hand tied seat. | Feather down pillows.

FINISH:



Gold_Bullion

FABRIC:



Pillow Fabric: 1-23''' x
23''' Pillow 3209-
74CC



1-21''' x 21''' Pillow
4103-95CC



1-12''' x 14''' Pillow
3213-92CC

Body Fabric: 2560-
34CC-P
Performance