

# caracole



## EMPRESS

uph-419-133-a

**COLLECTION:** CARACOLE UPHOLSTERY

**DIMENSIONS:** 28.25W x 40.25D x 33H

Fit for a queen, this remarkable Bergere chair makes a fashion-forward statement in any setting. Its seat cushions are upholstered in a stunning Asian-inspired fabric with pagoda motifs and surrounded with a Glazed Dove White finish. Open arms update the look of this chair's classic silhouette and are adorned with Pearl gold pinstripes and Robin's Egg Blue corner blocks. Offering a timeless look with a modern attitude, this distinctive design will reign supreme in any design plan.

**CONSTRUCTION:** Blendown cushion. | 8-Way hand tied seat.

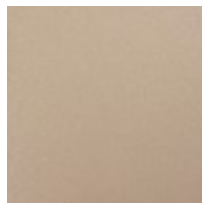
### FINISH:



Dove White



Robin's Egg



Radiant Pearl

**FABRIC:**



Body Fabric: 2694-88CC



Seat and Back  
Cushion 8330-52CC