

caracole



WHO WOOD FIGURE?

uph-419-039-a

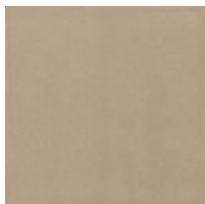
COLLECTION: CARACOLE UPHOLSTERY

DIMENSIONS: 27.5W x 27.75D x 31.5H

Express yourself and make your home a celebration of style with this handsome slipper chair. Its Klismos-inspired silhouette is freshly updated with a sumptuously soft sheepskin cover and Neutral Metallic finish on its painted wood trim. Delicately shaped yet comfortable for all, it's a signature piece perfect for making your space uniquely your own.

CONSTRUCTION: Plush poly foam cushion. | 8-Way hand tied seat.

FINISH:



Neutral_Metallic

FABRIC:



Body Fabric: 9160-34CC