

caracole



THREE'S COMPANY

uph-418-sec3-a

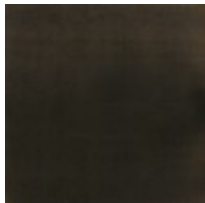
COLLECTION: CARACOLE UPHOLSTERY

DIMENSIONS: 128W x 49.75D x 32.5H

This regal sectional makes a dramatic showpiece that emanates glamour. Upholstered in a shadow grey velvet, its curved profile is complemented by sumptuous comfort. Reflecting the gracious elegance of the Hollywood Regency era, it features a shapely back button-tufted with vertical, cuff link-inspired gold metal bars. Its lower edge and outer arms are trimmed in Almost Black while its metal tapered feet are finished in Champagne Gold. Artful from edge to edge, this statement piece creates drama wherever it goes.

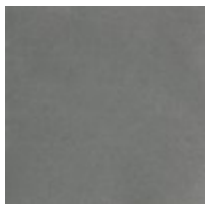
CONSTRUCTION: Springdown cushion. | 8-Way hand tied seat. | Feather down pillows.

FINISH:



Almost-Black

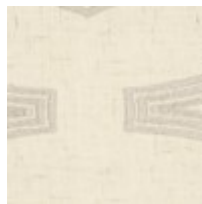
FABRIC:



Body Fabric: 2595-93CC



Pillow Fabric: 2-22" x 14" Pillows 8273-71CC



2-22" x 18" Pillows 8286-89CC