

# caracole



## THREE'S COMPANY (LAF CHAISE)

uph-418-lh1-a

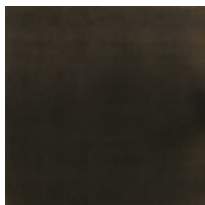
**COLLECTION:** CARACOLE UPHOLSTERY

**DIMENSIONS:** 64.5W x 48D x 32.5H

The epitome of glamour, our signature chaise is a dramatic showpiece worthy of a star of the silver screen. Upholstered in a soft shadow grey velvet, its curvaceous silhouette is complemented by sumptuous comfort. Capturing the gracious elegance of the Hollywood Regency era, it features a shapely back button-tufted with vertical, cuff link-inspired gold metal bars. Accent pillows include an embroidered platinum motif on linen and a pebble textured fabric. This chaise's lower edge is trimmed in Almost Black and accented with metal tapered feet in Champagne Gold. With unequaled aplomb, this distinctive chaise makes it easy to embrace your inner movie star

**CONSTRUCTION:** Springdown cushion. | 8-Way hand tied seat.

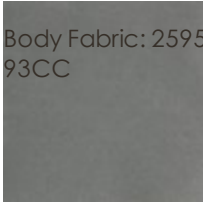
**FINISH:**



Almost-Black

**FABRIC:**

Body Fabric: 2595-  
93CC



Pillow Fabric: 1-22" x  
14" Pillow 8273-  
71CC



1-22" x 18" Pillow  
8286-89CC

