

# caracole



## LAID BACK

uph-418-132-a

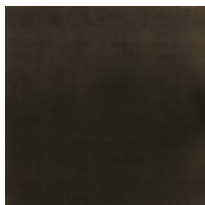
**COLLECTION:** CARACOLE UPHOLSTERY

**DIMENSIONS:** 30.5W x 36D x 33.5H

A curated piece for the distinctive home, this low-profile chair is unapologetically extraordinary. A menswear-inspired grid pattern in well-chosen shades of nickel, silver and dark grey distinguishes its seat cushion, back cushion and arm pads. You'll love how its Almost Black finish complements any interior décor scheme. Bold and curvaceous, it's the perfect choice for purveyors of style.

**CONSTRUCTION:** Plush poly foam cushion. | 8-Way hand tied seat.

**FINISH:**



Almost-Black

**FABRIC:**



Body Fabric: 6107-  
91CC