

caracole



HOLD ME UP

uph-418-131-a

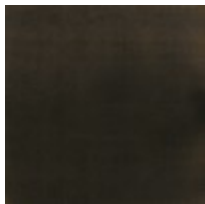
COLLECTION: CARACOLE UPHOLSTERY

DIMENSIONS: 37W x 36.5D x 27H

A definitive example of timeless sophistication, this stunning chair is pure joy. Upholstered in a neutral Congo taupe fabric and accented by Almost Black legs and Champagne Gold metal accents, it features an accent pillow in shades of bittersweet chocolate. Use it alone or in pairs to create a sophisticated seating area with unforgettable elegance

CONSTRUCTION: Springdown cushion. | 8-Way hand tied seat. | Feather down pillow.

FINISH:



Almost-Black

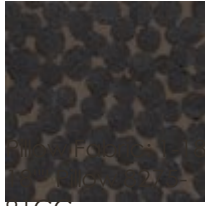
FABRIC:



Body Fabric: Inside
and Top Rail 2598-
44CC



Outside and Bottom
Rail 3173-35CC



91CC
" x