

caracole



HOLD ME UP

uph-418-111-a

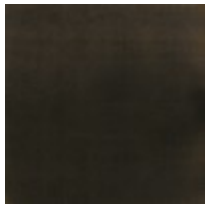
COLLECTION: CARACOLE UPHOLSTERY

DIMENSIONS: 95.75W x 36.75D x 27H

This captivating sofa exudes luxe appeal from its sumptuous seating to the refined tapered legs capped with gold heels and the most delicate bracing detail. Its upholstered base is graciously curved and cupped by a champagne gold metal plate. Perfect for lengthy conversations and entertaining, the three-seat design makes for a traditional appearance, while the nestled side bolsters say it's all about today's comfort. Upholstered in a neutral Congo taupe fabric and layered with sable and bittersweet chocolate color pillows, all which create a lesson in curated dimension thru the manipulation of color tones and textures.

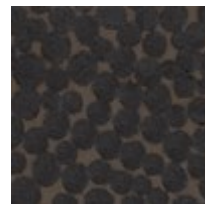
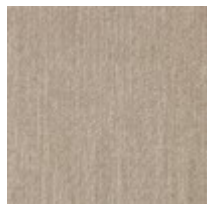
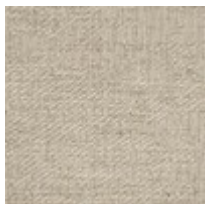
CONSTRUCTION: Springdown cushion. | 8-Way hand tied seat. | Feather down pillows.

FINISH:



Almost-Black

FABRIC:



Body Fabric: Inside
and Top Rail 2598-
44CC

Outside and Bottom
Rail 3173-35CC

Pillow Fabric: 2-20''' x
20''' Pillows 2611-
79CC

2-18''' x 18''' Pillows
8275-91CC