

caracole



COME FULL CIRCLE

uph-417-111-a

COLLECTION: CARACOLE UPHOLSTERY

DIMENSIONS: 82.5W x 30.5D x 33H

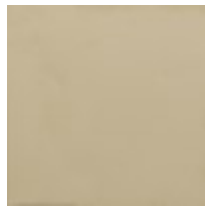
This button-tufted beauty offers inimitable style. Its shapely silhouette features a decorative inset metal frame with an open pattern of connecting circles—the symbol of no beginning and no end. A Whisper of Gold metal finish highlights its one-of-a-kind frame, and complements the dressy textured pure ivory fabric of its tufted, upholstered back and seat. With perfect proportions, the sofa is finished with fashion-inspired legs.

CONSTRUCTION: Plush poly foam cushion. | 8-way hand tied seat. | Feather down pillows.

FINISH:

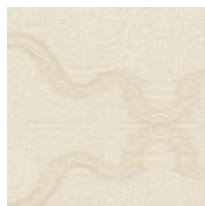


Auric



Whisper of Gold

FABRIC:



Body Fabric: 2490-
34CC

Pillow Fabric: 2-18" x
18" Pillows 5112-
34CC