

# caracole



## U TURN

uph-417-034-a

**COLLECTION:** CARACOLE UPHOLSTERY

**DIMENSIONS:** 31.25W x 26.75D x 30.5H

Handpicked for its ability to delight design aficionados, this one-of-a-kind chair always turns heads. With an upholstered interior in a soft buff colored velvet and

a contrasting satin swirl fabric on the outback, this chair can blend seamlessly into any decor. Its swivel base makes it ultimately functional, while elegant finishes in Pearl and Whisper of Gold add expressive elements of style.

**CONSTRUCTION:** Plush poly foam cushion. | 8-way hand tied seat.

**FINISH:**

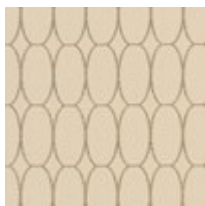
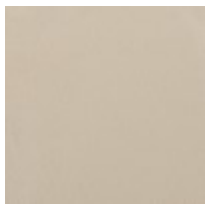


Pearl



Whisper of  
Gold

**FABRIC:**



Body Fabric:  
Inside Back  
and Seat 2301-  
35CC,  
Outback 8233-  
34CC