

# caracole



## FAIR AND SQUARE

uph-417-031-a

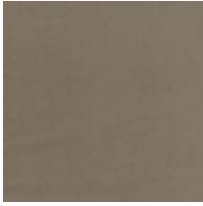
**COLLECTION:** CARACOLE UPHOLSTERY

**DIMENSIONS:** 33.5W x 40D x 33.25H

Let simplicity be your guide with the timeless, straightforward character of this swivel chair. Its classic styling is emphasized with a boxed back cushion and high dressmaker skirt with contrast satin underskirt. Free of excess and fussiness, it's just the choice for creating a space imbued with the spirit of everyday elegance.

**CONSTRUCTION:** Spring down cushion. | 8-way hand tied seat.

**FABRIC:**



Body Fabric:  
2432-70CC,  
Contrast Fabric  
under Skirt  
Pleats 3132-  
74CC