

# caracole



## WHORL LAF SWIVEL CHAIR

uph-024-037-a

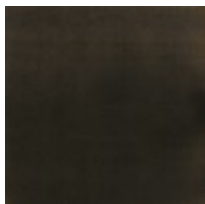
**COLLECTION:** CARACOLE UPHOLSTERY

**DIMENSIONS:** 31W x 28D x 29.5H

Reminiscent of the swirls inside a seashell, this feminine piece is fully-upholstered in iridescent Taupe vintage velvet chenille. Affording a chic profile, this chair is remarkable for its asymmetrical, downward sweeping back that glides around the piece. The deep barrel seat provides posh comfort. The swivel base is finished in Almost Black. This is the perfect, soft accent piece for a bedroom, dressing room or refined living area.

**CONSTRUCTION:** Rubber webbing | Tight seat

**FINISH:**



Almost-Black

**FABRIC:**



Body Fabric: 21008-  
35CC