

caracole



LOUISETTE

uph-022-231-a

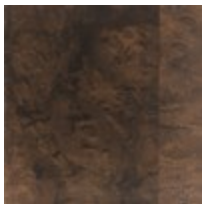
COLLECTION: CARACOLE UPHOLSTERY

DIMENSIONS: 30.75W x 28.25D x 33.75H

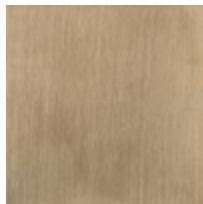
With an elegant silhouette inspired by a French antique, this accent chair is named after the proprietress of a little cafe tucked away in the famed flea market district of Paris, Saint-Ouen. Louisette adds classic warmth and a note of luxe with its slender frame in Champagne Gold and rust-colored mohair fabric with an exposed Galway Burl accent cinching the outside back.

CONSTRUCTION: Webbing | Foam seat cushion

FINISH:

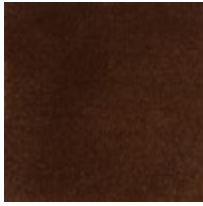


Galway Burl



Champagne Gold

FABRIC:



Body Fabric: 2681-
80CC