

caracole



COUNTER BALANCE SOFA

uph-022-012-a

COLLECTION: CARACOLE UPHOLSTERY

DIMENSIONS: 98W x 38.5D x 25.75H

A refined mix of texture and material, the Counter Balance sofa is soft-lined yet sophisticated in an oatmeal melange woven fabric with subtle rust threading. Channel-tufted arms with a slightly angled taper comfortably enclose its loose seat back cushions, propped by a faux-leather-wrapped, counter balance capped in Brushed Gold. Reeded cast legs add tactile appeal and a note of distinction.

CONSTRUCTION: 8-way hand tied seat. | Spring down cushions.

FINISH:

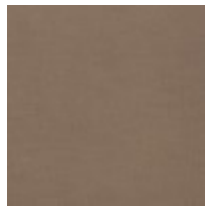


Brushed_Gold

FABRIC:



""Body Fabric: 4128-30CC-P
Performance



Back Wood Rod:
9176-78CC""

