

caracole



BACK IN STYLE

uph-021-231-a

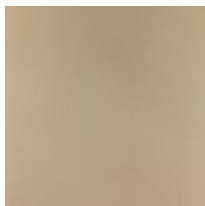
COLLECTION: CARACOLE UPHOLSTERY

DIMENSIONS: 29.25W x 35D x 29.75H

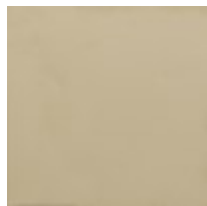
Artful and alluring in a luxe material mix, this lounge chair captures the tranquil beauty of gently swaying kelp ribbons beneath the waves in a coral reef. Accentuating its sheltering, barrel-style back: a shimmering layer of champagne faux silk framed beneath rippling metal bands and pearl-like beads in a Whisper of Gold for added dimension. The inside back and seat cushion are finely tailored in a silver micro-chenille performance fabric with gold foil accent yarns for added glimmer.

CONSTRUCTION: 8-way hand tied seat. | Springdown cushion. | Feather down pillow.

FINISH:



Taupe Paint



Whisper of Gold

FABRIC:



Body Fabric: Inside
2851-92CC-P
Performance,
Outside under metal
framework 3248-
87CC



Pillow Fabric: 1-18" x
18" Pillow 3248-
87CC