

caracole



YOU COMPLETE ME

uph-021-035-a

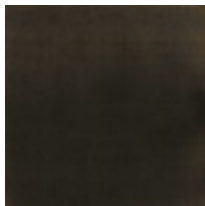
COLLECTION: CARACOLE UPHOLSTERY

DIMENSIONS: 37W x 36.25D x 29.75H

Pleated seams add a subtly sophisticated detail to this softly rounded swivel chair, finely tailored in an easy-care chenille performance fabric. An elevating addition to any seating area, its gracefully curved silhouette appears to float atop a recessed plinth base in an Almost Black finish. A feather down pillow in shimmering satin adds a luxe finishing touch. Matching sofa also available.

CONSTRUCTION: 8-way hand tied seat. | Springdown cushion. | Feather down pillow.

FINISH:



Almost-Black

FABRIC:



Body Fabric: 2865-
92CC-P
Performance



Pillow Fabric: 1-20^{'''} x
20^{'''} Pillow 3249-
92CC