

# caracole



## WELL APPOINTED

uph-020-134-b

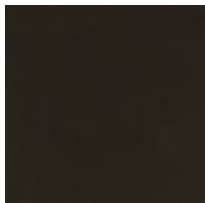
**COLLECTION:** CARACOLE UPHOLSTERY

**DIMENSIONS:** 26.5W x 32.25D x 34H

Distinctly modern, this accent chair lends a timeless design, revered for its refined use of materials and attention to detail. Of note are slender arms, adding elegance to a simple shape, and gradually widening at the back for added comfort where the elbows rest. An exposed wood base and tall tapered legs in Dark Chocolate are artfully capped by metal ferrules in a Whisper of Gold. Introduces warm autumn tones in an embroidered pattern fabric with a Japanese bonsai tree of life motif.

**CONSTRUCTION:** Webbed seat. | Plush poly foam cushion.

**FINISH:**



Dark\_Chocolate

**FABRIC:**



Body Fabric: 8403-  
45CC