

# caracole



## SWEET AND PETITE

uph-020-131-a

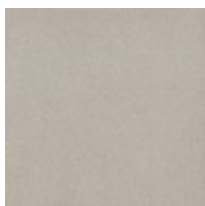
**COLLECTION:** CARACOLE UPHOLSTERY

**DIMENSIONS:** 29.5W x 34.75D x 35.25H

Designed with the utmost attention to detail, this casual chair introduces effortless glamour to bedrooms and seating areas. Gently sloping arms and an inverted camel back are beautifully balanced on an exposed wood base, with trim and chamfered legs in a Soft Silver Paint. Features a smooth back and plush seat cushion, impeccably tailored in a luxurious performance fabric.

**CONSTRUCTION:** 8-way hand tied seat. | Springdown cushion.

**FINISH:**



Soft\_Silver\_Paint

**FABRIC:**



Body Fabric: 2817-  
34CC-P  
Performance