

caracole



WING TIP

uph-019-035-b

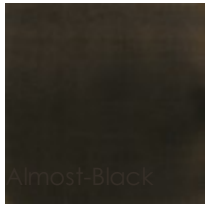
COLLECTION: CARACOLE UPHOLSTERY

DIMENSIONS: 32W x 35D x 45.5H

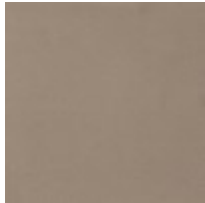
Command the room from any view with this contemporary take on the classic wing chair. Beckoning in a lush pewter velvet with channeled seams along the back, it features a shapely, slender wood frame in Almost Black, accentuated by padded armrests and welt in dove gray leather. Pierced metal ferrules in Deep Bronze add an element of distinction with a hint of bling.

CONSTRUCTION: 8-way hand tied seat. | Plush poly foam cushion.

FINISH:



FABRIC:



Body Fabric: 2872-91CC, Arm Pads and Body and Seat Cushion Welt 9133-71CC Leather