

caracole



WELT PLAYED

uph-019-0310-b

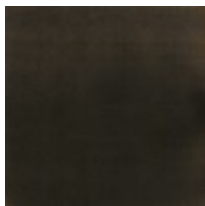
COLLECTION: CARACOLE UPHOLSTERY

DIMENSIONS: 39W x 40D x 32.5H

Drawing inspiration from Fashion Week in Paris, the Welt Played chair offers modern styling brought to life with warmth and texture. Tailored in a smoky taupe performance fabric, it features clean lines and linear forms outlined with contrasting welts in a cream velvet. The resulting aesthetic is one of understated sophistication. Collection includes a matching sofa and sleeper with three different colorway options.

CONSTRUCTION: Springdown cushion. | 8-Way hand tied seat. | Feather down pillow.

FINISH:



Almost-Black

FABRIC:



Pillow Fabric: 1-19" x
19" Pillow 2831-
71CC



Body Fabric: 2830-
71CC-P
Performance with
Contrast Welt 2832-
34CC